

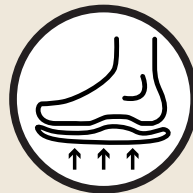
UNDERSTANDING THE ICONS

In this catalog you will find these icons on some of the products.
Here is an overview of what they mean.



Hero

Products supported by
a marketing campaign



Ortholite[®] insoles

The footwear has an
Ortholite insole
(see page 6)



Sustainable leather

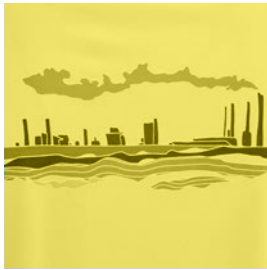
Products made from sustainable
developed leather



Recycled fabric

Products made from
recycled polyester

CONTENTS



04
Design direction



06
Ortholite



08
Sustainable
development
of leather



10
Female specific



14
Honey + Comb



26
Marketing

FOOTWEAR

DESIGN DIRECTION

For Sport Style SS21 we celebrate life. Genuine Connections. Togetherness.

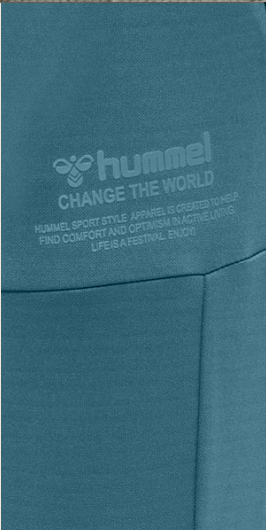
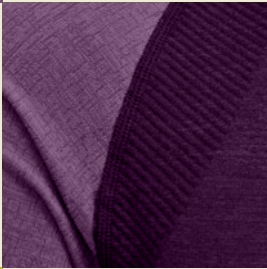
The quirky and playful mash-up of festival styling offer as our main inspiration this season. And now – more than ever – the very essence of lighthearted festival vibes defines our mounting crave for social gatherings.

For mixing up our new normal.

From beginning to end it's a collection offering multi-purpose wear with updated, asymmetrical colour-blockings, sporty nudes and alternate dyeing celebrating the beauty of imperfections. It's (still) all about functionality. And fewer styles doing more work.

Our relationship with the ocean takes on a more prominent role for the swim silhouettes - adding alternate takes on strong sustainability statements. Digital graphics. Subdued tie-dye. Recycled polyester. Reminding us that not everything is what it may seem.

A conscious blend of sport, fashion and environmental focus wins out.





Ortholite[®]

**ULTIMATE ECO-FRIENDLY
COMFORT & PERFORMANCE**

FOOTWEAR

- LONG-TERM CUSHIONING
- LIGHTWEIGHT
- HIGH-LEVEL BREATHABILITY
- WASHABLE
- MOISTURE MANAGEMENT
- ECO FRIENDLY



OrthoLite® Hybrid™

OrthoLite® Hybrid™ provides cushioning and performance critical in insole, strobels and upper applications. The hybrid formulation creates a cooler, drier environment inside the footwear, so consumers can feel and perform their best.

OrthoLite® Recycled™

OrthoLite® Recycled™ delivers the perfect fully recycled solution for eco-friendly support, stability and underfoot comfort in either a single density or dual-layer option. In a dual-layer application where a firmer base is required with softer foam on top, OrthoLite® Recycled™ delivers immediate step-in comfort while retaining all of the key attributes that OrthoLite® is known for.

FOOTWEAR

SUSTAINABLE DEVELOPMENT OF LEATHER



LWG GOLD RATED

The "Gold LWG Award" recognition is an important award bestowed to hummel leather supplier Gruppo Mastrotto for its good ethical, environmental and safety practice in the processing of hides.

The Leather Working Group (LWG) is made up of member brands, retailers, product manufacturers, leather manufacturers, chemical suppliers and technical experts that have worked together to develop an environmental stewardship protocol specifically for the leather manufacturing industry.

FOOTWEAR

ECO

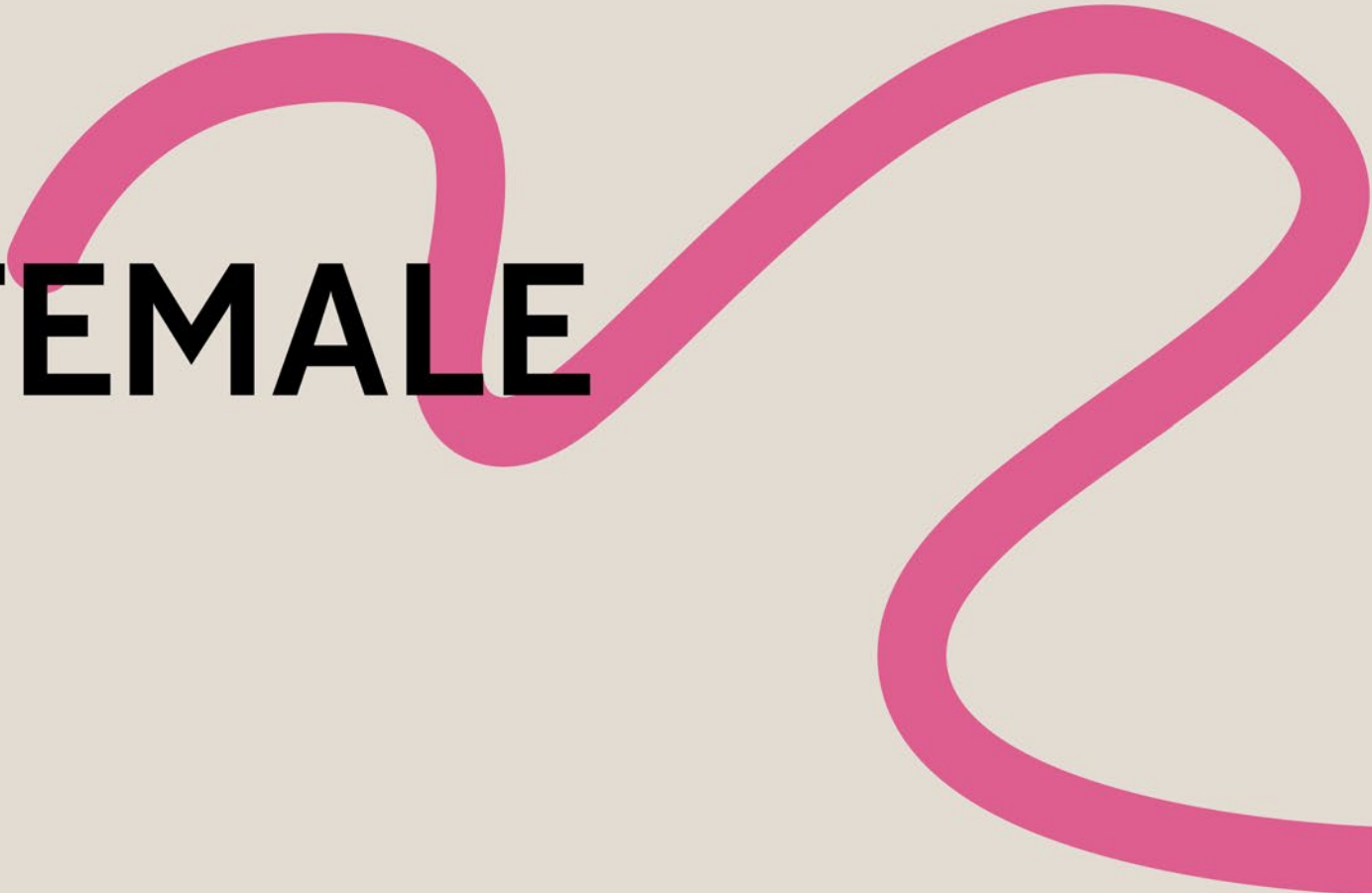


DER BLAUE ENGEL

Blauer Engel, the German government certification, proves the ecological quality of the leathers produced by hummel leather supplier Gruppo Mastrotto. The leathers are produced with the purpose to minimize their impact on the health and the environment during the production phase as well as in the recycling and disposal phases. Blauer Engel-certified products further protect the environment and the health of people thanks to a series of tangible benefits:

- × **Lower consumption of water during the various production phases**
- × **Use of raw materials produced in a sustainable fashion**
- × **Sound use of resources during the production or disposal phases**
- × **Absence of harmful effects on the health and the environment because of the low of emissions**
- × **Easy to recycle**

FEMALE





SPECIFIC

FOOTWEAR

209039 // REACH LX 3000

Quality: TEXTILE/MICROFIBER SUEDE **Sizes:** 36 - 42

Mesh & microfiber suede upper / Midsole with reach technology / Energy return / Rubber outsole / Tpu hotmelts / Moulded ortholite insole / Lightweight / Low cut / Runner style/ Ortholite insole

DKK 799,95 / **SEK** 1.100,00 / **NOK** 1.100

EUR 99,95 / **GBP** 90 / **USD** 119.95 / **CHF** 124,95



The REACH LX 3000 brings the heat. Sporting a retro mesh upper combined with PU hotmelt overlays and a single-layer microfiber tongue with a debossed logo. This deconstructed, handball-inspired silhouette features our unique REACH technology and a comfortable Ortholite insole for enhanced, lightweight comfort.



3610
Tea Rose



9041
Blanc De Blanc

210623 // TREK SANDAL BREAKER

Quality: MESH/NEOPRENE **Sizes:** 36 - 42

Mesh upper / Neoprene straps / Velcro closure / Midsole with breaker technology / Rubber outsole / Sculptured organic sidewall inspired by the waves / Mould eva insole insert / Tpu print / Lightweight / Sandal style / Female specific

DKK 399,95 / **SEK** 580,00 / **NOK** 550

EUR 49,95 / **GBP** 48 / **USD** 59.95 / **CHF** 60,00

Going Trekking? Why not do it with style and comfort. The TREK SANDAL BREAKER features an original design inspired a trekking sandal but fused with our BREAKER outsole. The lightweight sandal is all about comfort! We have designed a special moulded EVA insole, inserted directly into the midsole. The upper material is breathable mesh with statement neoprene straps (adjustable). Available in earthy summer colors with a pop. Summer has never felt more comfortable



2001
Black



8062
Vetiver



9186
Whisper White

FOOTWEAR

210982 // HB TEAM SUEDE WMNS

Quality: LEATHER **Sizes:** 36 - 42

Italian suede upper / Rubber outsole / Heritage style / New updated shape / Moulded insole / Low cut / Court style / Female specific

DKK 599,95 / **SEK** 850,00 / **NOK** 800

EUR 79,95 / **GBP** 75 / **USD** 89.95 / **CHF** 90,00



A contemporary take on an oldschool silhouette, the HB TEAM SUEDE sports an updated, slimmer silhouette alongside a soft suede upper and and gum outsole. The lush suede is sourced from the renowned Italian tannery, Mastrotto, Gold Rated by the leather working group and Blue Angel certified for the ecological quality of the leathers.



3655
Cloud Pink



3657
Hibiscus

211953 // TROPHY SUEDE

Quality: SUEDE **Sizes:** 36 - 42

Italian suede upper / Rubber outsole / Unlined / Moulded insole / Low cut / Court style / Female specific

DKK 499,95 / **SEK** 700,00 / **NOK** 650

EUR 64,95 / **GBP** 60 / **USD** 74.95 / **CHF** 75,00



Inspired by our classic VICTORY silhouette, we want to introduce our TROPHY; the sleek silhouette is rooted in old school court style but with a modern deconstructed and unlined upper. Classic gum outsole with a butter soft suede upper and tonal stitched chevron for a subtle look. A crisp minimalist female trainer. The lush suede is sourced from the renowned Italian tannery, Mastrotto, Gold Rated by the leather working group and Blue Angel certified for the ecological quality of the leathers.



2003
Light Grey



4337
Dusty Rose



7002
Blue

HONEY COMB





FOOTWEAR

209039 // REACH LX 3000

Quality: TEXTILE/MICROFIBER SUEDE **Sizes:** 36 - 46

Mesh & microfiber suede upper / Midsole with reach technology / Energy return / Rubber outsole / Tpu hotmelts / Moulded ortholite insole / Lightweight / Low cut / Runner style/ Ortholite insole

DKK 799,95 / **SEK** 1.100,00 / **NOK** 1.100

EUR 109,95 / **GBP** 100 / **USD** 119.95 / **CHF** 124,95



The REACH LX 3000 brings the heat. Sporting a retro mesh upper combined with PU hotmelt overlays and a single-layer microfiber tongue with a debossed logo. This deconstructed, handball-inspired silhouette features our unique REACH technology and a comfortable Ortholite insole for enhanced, lightweight comfort.



1025
Magnet



2001
Black



9001
White



9078
Eggnog

206324 // POWER PLAY

Quality: LEATHER **Sizes:** 36 - 47

Leather suede. / Eur sizes. / Archive inspired. / Court style. / Premium leather.

DKK 699,95 / **SEK** 1.000,00 / **NOK** 950

EUR 89,95 / **GBP** 85 / **USD** 109.95 / **CHF** 109,95



An original and extremely popular hummel® silhouette, the POWER PLAY trainer is all about sporting those authentic tennis vibes. Offered in a soft grained Italian leather upper and sitting atop an all-gum outsole. The soft leather is sourced from the renowned Italian tannery, Mastrotto, Gold Rated by the leather working group and Blue Angel certified for the ecological quality of the leathers. Entering a new era for a true classic.



2001
Black



9001
White



9034
White/Black/Grey



9109
White/Blue

FOOTWEAR

210984 // MARATHONA SUEDE

Quality: NYLON/SUEDE **Sizes:** 36 - 46

Suede & cordura nylon upper / Die-cut eva midsole / Rubber outsole / Moulded tpu heel counter / moulded ortholite insole / Low cut / Retro runner style/ Ortholite insole

DKK 899,95 / **SEK** 1.300,00 / **NOK** 1.200

EUR 109,95 / **GBP** 110 / **USD** 139.95 / **CHF** 140,00



Originally designed for long-distance runners back in the 80s, the MARATHONA SUEDE HIVE is back in a premium, long haired suede edition with a sporty silhouette upgrade. Covered in a soft hairy suede upper combined with durable cordura nylon. A recycled Ortholite insole for advanced and bold, archive-inspired colour rotations giving of a nostalgic vibe. A modern revival of our all time classic.



1968
Quarry



9804
Bone White

208679 // VICTORY

Quality: SUEDE **Sizes:** 36 - 47

DKK 599,95 / **SEK** 850,00 / **NOK** 800

EUR 79,95 / **GBP** 75 / **USD** 89.95 / **CHF** 89,95



To honour its indoor hardcourt heritage dating back to 1979, the VICTORY is grounded by an old school gum outsole while the upper and shape has been streamlined for the modern court. A tweaked and slimmed outsole and classic hummel® chevrons keeps it modern. A crisp minimalist trainer for true (and nostalgic) sneaker heads. The lush suede is sourced from the renowned Italian tannery, Mastrotto, Gold Rated by the leather working group and Blue Angel certified for the ecological quality of the leathers.



2001
Black



1009
Black Iris



2004
Grey

FOOTWEAR

211594 // POWER PLAY PATCHWORK

Quality: SUEDE **Sizes:** 36 - 46

Italian suede & nylon upper / Hairy leather / Animal print / Rubber outsole / Heritage style / New updated shape / Moulded insole / Low cut / Court style

DKK 899,95 / **SEK** 1.300,00 / **NOK** 1.200

EUR 109,95 / **GBP** 110 / **USD** 139.95 / **CHF** 140,00



Our iconic silhouette POWER PLAY take a wild turn with this animal print take on our classic silhouette. The upper is mix of suede, hairy hides with animal print and sporty nylon. An truly eye-catching shoe that requires your attention. It's a modern tale of our true classic. The lush suede is sourced from the renowned Italian tannery, Mastrotto, Gold Rated by the leather working group and Blue Angel certified for the ecological quality of the leathers. Entering a new era for a true classic.



2858
Sharkskin



9806
Marshmallow

212184 // POWER PLAY SUEDE

Quality: SUEDE **Sizes:** 36 - 47

Italian suede upper / Rubber outsole / Heritage style / New updated shape / Moulded insole / Low cut / Court style

DKK 699,95 / **SEK** 1.000,00 / **NOK** 950

EUR 89,95 / **GBP** 85 / **USD** 109.95 / **CHF** 110,00



The POWER PLAY SUEDE in a another premium execution. The all-suede upper sports a clean colourway set off by eye-catching details. It's iconic wear-with-everything kicks. The lush suede is sourced from the renowned Italian tannery, Mastrotto, Gold Rated by the leather working group and Blue Angel certified for the ecological quality of the leathers. Entering a new era for a true classic.



2003
Light Grey



9804
Bone White

FOOTWEAR

208680 // HB TEAM

Quality: LEATHER/SUEDE **Sizes:** 36 - 47

Italian leather upper / Rubber outsole / Heritage style / New updated shape / Moulded insole / Low cut / Court style

DKK 699,95 / **SEK** 1.000,00 / **NOK** 950

EUR 89,95 / **GBP** 85 / **USD** 109,95 / **CHF** 109,95



A contemporary take on an oldschool silhouette, the HB TEAM LEATHER sports an updated, slimmer silhouette alongside a cool leather upper and a gum outsole. The soft leather is sourced from the renowned Italian tannery, Mastrotto, Gold Rated by the leather working group and Blue Angel certified for the ecological quality of the leathers.



9001
White



9124
White/Black



9208
White/Green

210983 // HB TEAM SUEDE

Quality: SUEDE **Sizes:** 36 - 47

Italian suede upper / Rubber outsole / Heritage style / New updated shape / Moulded insole / Low cut / Court style

DKK 599,95 / **SEK** 850,00 / **NOK** 800

EUR 79,95 / **GBP** 75 / **USD** 89,95 / **CHF** 90,00



A contemporary take on an oldschool silhouette, the HB TEAM SUEDE sports an updated, slimmer silhouette alongside a soft suede upper and a gum outsole. The lush suede is sourced from the renowned Italian tannery, Mastrotto, Gold Rated by the leather working group and Blue Angel certified for the ecological quality of the leathers.



8571
India Ink



9186
Whisper White

FOOTWEAR

208681 // VM78 CPH NYLON

Quality: TEXTILE/SUEDE **Sizes:** 36 - 47

Italian suede & nylon upper / T-toe derby construction / Rubber outsole / Moulded insole / Low cut / Court style

DKK 599,95 / **SEK** 850,00 / **NOK** 800

EUR 79,95 / **GBP** 75 / **USD** 89.95 / **CHF** 89,95



Tweaking an extremely popular heritage silhouette, the VM78 CPH NYLON offers a modern take on an archive classic. Featuring an original rubber outsole, a nylon upper with suede detailing and a classic T-toe. The slimmer silhouette adds a contemporary look while strong hummel® branding pays tribute to our proud heritage. The lush suede is sourced from the renowned Italian tannery, Mastrotto, Gold Rated by the leather working group and Blue Angel certified for



2001
Black

210625 // COMBAT BREAKER JAQUARD

Quality: textile **Sizes:** 36 - 46

Engineered jaquard knit upper / Midsole with breaker technology / Rubber outsole / Sculptured organic sidewall inspired by the waves / Moulded ortholite insole / Gradient colors / Lightweight / Low cut / Runner style / Ortholite insole

DKK 599,95 / **SEK** 850,00 / **NOK** 800

EUR 79,95 / **GBP** 75 / **USD** 89.95 / **CHF** 90,00



The COMBAT BREAKER JAQUARD is a sporty twist on the compelling hummel® COMBAT BREAKER. The sleek silhouette features an engineered jaquard knit upper with a soft microfiber collar, in vibrant gradient summer colors. It sits atop the BREAKER outsole crafted from ultra-responsive bounce foam with a sculptured organic sidewall inspired by the waves. Moulded Ortholite insole for comfort offering a technical training vibe. Sporting reflective detailing and bar tag stitching fused with silicon print. A sneaker icon in the making!



2001
Black



8378
Blue Aster



9001
White

FOOTWEAR

208378 // STADIL LOW OGC 3.0

Quality: TEXTILE/SUEDE **Sizes:** 36 - 46

Canvas & suede upper / Vulcanized outsole / Texture foxing / Ortholite die-cut insole / Low cut / Plimssole style/ Ortholite insole

DKK 499,95 / **SEK** 700,00 / **NOK** 650

EUR 64,95 / **GBP** 60 / **USD** 74,95 / **CHF** 74,95



A tribute to (maybe) the most original of all: the STADIL LOW OGC 3.0. Sporting a old school red, white and blue hummel colourway alongside a vulcanised outsole. The king of casual cool in its original take.



1009
Black Iris

2001
Black

9001
White

9228
White/Blue/Red/Gum

207548 // STADIL 3.0 SUEDE

Quality: SUEDE **Sizes:** 36 - 46

Suede upper / Vulcanized outsole / Texture foxing / Ortholite die-cut insole / Low cut / Plimssole style

DKK 599,95 / **SEK** 849,95 / **NOK** 800

EUR 79,95 / **GBP** 70 / **USD** 94,95 / **CHF** 89,95

A classic hummel® silhouette, the STADIL LOW 3.0 SUEDE offers a premium all-suede upper with a monochrome colourway, this updated STADIL silhouette offers a more refined and considered eye stay with a reduced number of eyelets alongside higher foxing. The vulcanized outsole adds extra character to the silhouette. Reimagining a hummel icon.



2001
Black

9806
Marshmallow

FOOTWEAR

211811 // REACH LX 600

Quality: MESH **Sizes:** 36 - 46 (AVAILABLE IN HALF-SIZES)

Mesh upper / Midsole with reach technology / Energy return / Rubber outsole / Moulded tpu heel counter / Tpu toe print / Minimalist design / Moulded ortholite insole / Lightweight / Low cut / Runner style

DKK 699,95 / **SEK** 1.000,00 / **NOK** 950

EUR 89,95 / **GBP** 85 / **USD** 109.95 / **CHF** 110,00



With an innovative mix of technology and style, REACH LX 600 will take you further. Featuring the unique REACH technology that offers you incredible energy return - providing even more power and endurance every step of the way. Sporting an engineered fit with an Ortholite insole alongside an adaptive mesh upper for lightweight, long-lasting comfort. The silhouette features a TPU and neoprene heel counter for enhanced stability and flexibility. Overlock stitching adds the final touch. Get ready for empowered movement in every step.



1923
Silver Cloud



2001
Black



8587
Mykonos Blue



9001
White



9804
Bone White

211826 // REACH LX 300

Quality: TEXTILE **Sizes:** 36 - 55L (AVAILABLE IN HALF-SIZES)

Engineered jaquard knit upper / Sock construction / Midsole with reach technology / Energy return / Rubber outsole / Moulded tpu heel counter / Mould chevron cage for arch support / Moulded ortholite insole / Lightweight / Low cut / Runner style

DKK 699,95 / **SEK** 1.000,00 / **NOK** 950

EUR 89,95 / **GBP** 85 / **USD** 109.95 / **CHF** 110,00



With an innovative mix of technology and style, REACH LX 300 will take you further. Featuring the unique REACH technology that offers you incredible energy return - providing even more power and endurance every step of the way. Sporting an engineered fit and an Ortholite insole alongside an adaptive knit upper for lightweight, long-lasting comfort and excellent breathability. The silhouette features a TPU heel counter for enhanced stability combined with TPU reinforcements on the toe cap and molded silicone chevrons offering great arch support. The reflective heel strap offers eye-catching visibility. Get ready for empowered movement in every step.



2001
Black



8587
Mykonos Blue



9001
White



9801
Bright White

FOOTWEAR

208995 // MINNEAPOLIS BREAKER SEAMLESS

Quality: TEXTILE **Sizes:** 36 - 46

Seamless knit upper / Recycled polyester yarns / One piece knit construction / Midsole with breaker technology / Rubber outsole / moulded ortholite insole / Lightweight / Low cut / Runner style/ Recycled fabric / Ortholite insole

DKK 749,95 / **SEK** 1.100,00 / **NOK** 1.000

EUR 99,95 / **GBP** 90 / **USD** 109,95 / **CHF** 114,95



A groundbreaking newcomer has arrived. The MINNEAPOLIS BREAKER SEAMLESS features an extremely breathable and lightweight seamless upper crafted from recycled PET bottles. It sits atop the BREAKER outsole providing great ease of movement. An Ortholite insole takes comfort to the next level. Our responsible edit.



2001
Black



3610
Tea Rose



9806
Marshmallow

208996 // TRINITY BREAKER SEAMLESS

Quality: TEXTILE **Sizes:** 36 - 46

Seamless knit upper / Recycled polyester yarns / Midsole with breaker technology / Rubber outsole / moulded ortholite insole / Lightweight / Low cut / Runner style/ Recycled fabric / Ortholite insole

DKK 649,95 / **SEK** 950,00 / **NOK** 850

EUR 84,95 / **GBP** 80 / **USD** 99,95 / **CHF** 99,95



Recycled and sustainable. The TRINITY BREAKER SEAMLESS features a seamless upper crafted from recycled PET bottles offering a breathable, lightweight choice for conscious sneakerheads. Working a sock silhouette, this clean design is offset by the contrasting BREAKER outsole and an Ortholite insole for advanced comfort. A branded tongue in microfiber adds a sporty feel. Our responsible edit.



1923
Silver Cloud



2189
Humus



2267
Anthracite



7459
Dress Blue



9001
White

FOOTWEAR

206575 // POOL SLIDE RETRO

Quality: EVA **Sizes:** 36 - 46

Archive strap / Seasonal colorways

DKK 149,95 / **SEK** 199,95 / **NOK** 200

EUR 19,95 / **GBP** 18 / **USD** 24.95

A modern shower slide, the POOL SLIDE is offered with a PU strap with an embossed hummel wordmark. The slide comes in bright colors for a sporty look. The water-resistant slides are lightweight and flexible offering great comfort. An EVA foam midsole and outsole make for great flexibility and bounce.



2001
Black

3062
True Red

8587
Mykonos Blue

9001
White

211370 // WAVE BLOCK FLIP FLOP

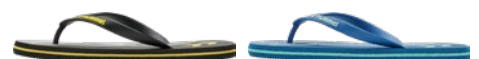
Quality: PU/EVA **Sizes:** 36 - 46

Rubber toe tong upper / Eva outsole / Wave artwork print / Low-cut / Sandal style

DKK 129,95 / **SEK** 180,00 / **NOK** 180

EUR 16,95 / **GBP** 16 / **USD** 18.95 / **CHF** 20,00

A modern shower slide, the POOL SLIDE is offered with a woven strap with our wave pattern. The water-resistant slides are lightweight and flexible offering great comfort. An EVA foam midsole and outsole make for great flexibility and bounce.



2001
Black

8587
Mykonos Blue

FOOTWEAR

211373 // MULTI STRIPE FLIP FLOP

Quality: PU/EVA **Sizes:** 36 - 46

DKK 129,95 / **SEK** 180,00 / **NOK** 180
EUR 16,95 / **GBP** 16 / **USD** 18.95 / **CHF** 20,00

A modern shower slide, the POOL SLIDE is offered with a PU strap with our iconic sporty design. The water-resistant slides are lightweight and flexible offering great comfort. An EVA foam midsole and outsole make for great flexibility and bounce.



2001
Black



3657
Hibiscus



7381
Dark Navy



MARKETING



FOOTWEAR

REACH
+
hummel®
REACH

LX 300

hummel®
REACH
hummel®
REACH



SPRING **SUMMER**
2021

SEAM-



TRINITY
BREAKER

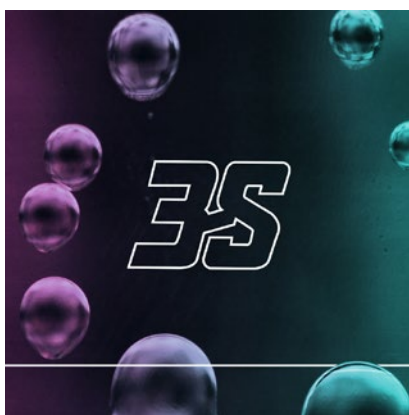
**FEATURING
UPPER MADE
FROM RECYCLED
POLYESTER**

LESS



FOOTWEAR

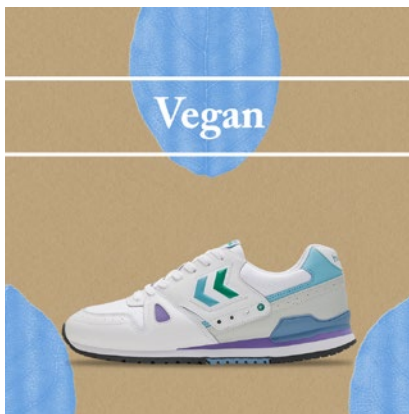
PURPLE/TEAL THEME – MOTION



FEMALE SPECIFIC – MOTION



VEGAN – MOTION



FOOTWEAR

POWER PLAY – MOTION



